

Disney · PIXAR
**FINDING
 DORY**

IN THEATERS JUNE 17

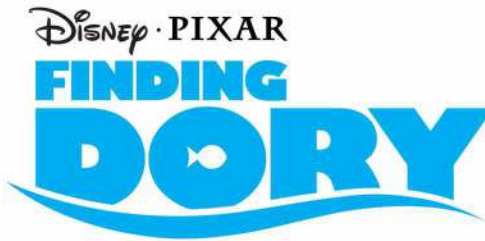
MEMORY MATCH

Have an adult cut out the cards from all six pages. Fold each card on the indicated line and glue or tape the inside to make a two-sided card with the logo on one side and the character on the other. Place the cards character side down on a smooth surface and mix them up. Turn over two cards at a time to see if they match. If they don't, turn them face down again. Take turns turning over cards using your memory to recall where a matching card may be located. The person who matches the most pairs wins!



HANK

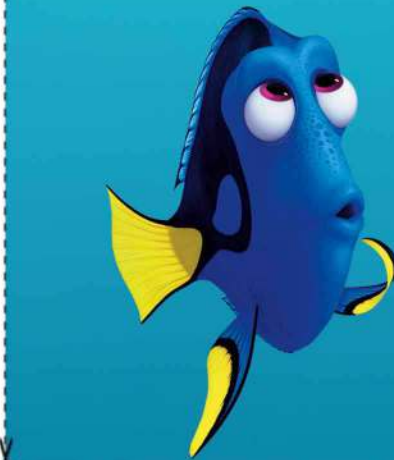
FOLD



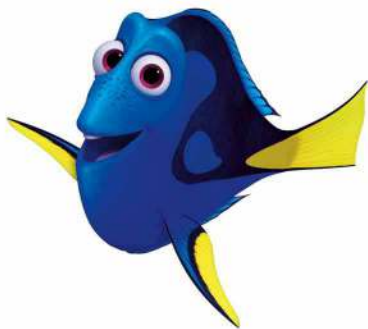
FOLD



HANK

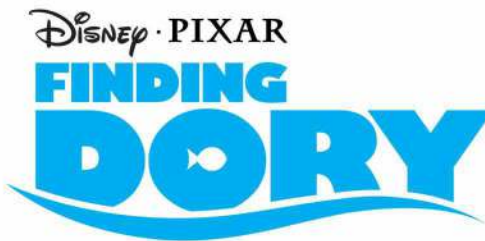


FOLD



DORY

FOLD



DORY

Disney · PIXAR
**FINDING
 DORY**

IN THEATERS JUNE 17

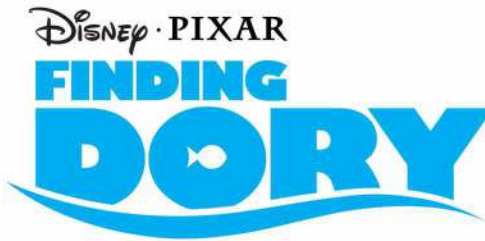
MEMORY MATCH

Have an adult cut out the cards from all six pages. Fold each card on the indicated line and glue or tape the inside to make a two-sided card with the logo on one side and the character on the other. Place the cards character side down on a smooth surface and mix them up. Turn over two cards at a time to see if they match. If they don't, turn them face down again. Take turns turning over cards using your memory to recall where a matching card may be located. The person who matches the most pairs wins!



BAILEY

FOLD



FOLD



BAILEY

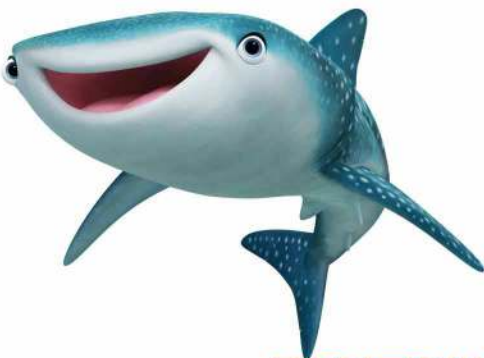


Disney · PIXAR



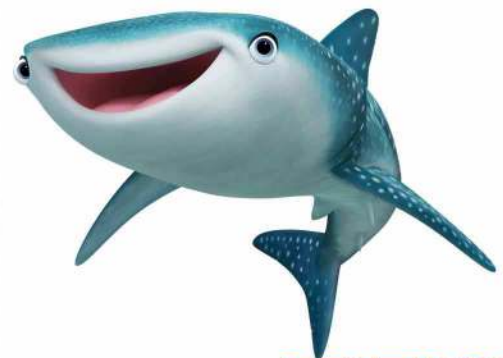
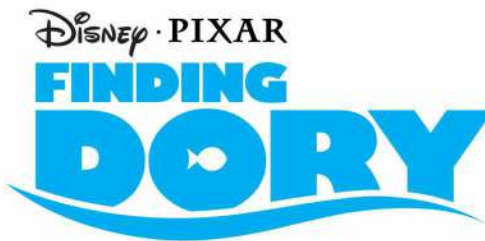
Disney · PIXAR

FOLD



DESTINY

FOLD



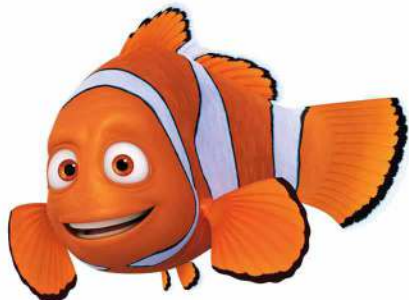
DESTINY

Disney • PIXAR
**FINDING
 DORY**

IN THEATERS JUNE 17

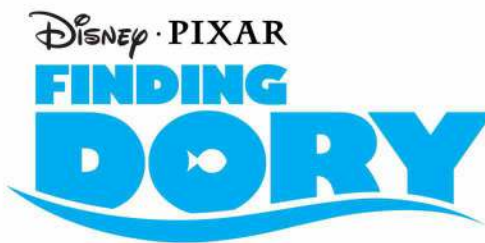
MEMORY MATCH

Have an adult cut out the cards from all six pages. Fold each card on the indicated line and glue or tape the inside to make a two-sided card with the logo on one side and the character on the other. Place the cards character side down on a smooth surface and mix them up. Turn over two cards at a time to see if they match. If they don't, turn them face down again. Take turns turning over cards using your memory to recall where a matching card may be located. The person who matches the most pairs wins!

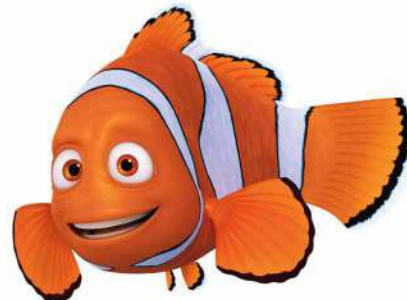


MARLIN

FOLD



FOLD



MARLIN

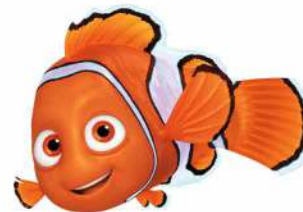
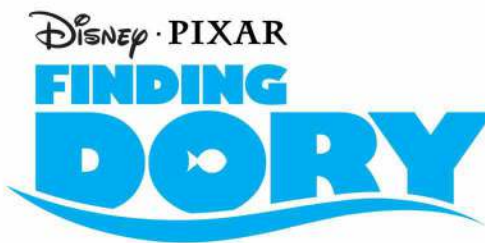


FOLD



NEMO

FOLD



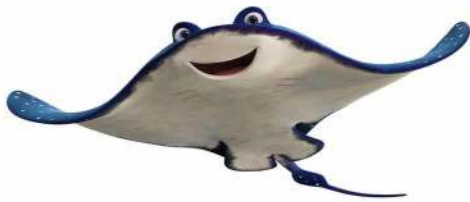
NEMO

Disney • PIXAR
**FINDING
DORY**

IN THEATERS JUNE 17

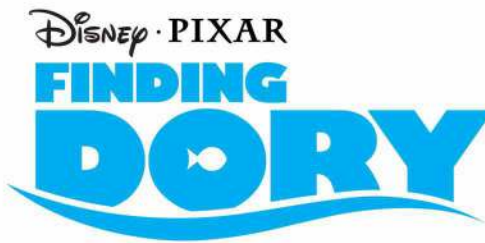
MEMORY MATCH

Have an adult cut out the cards from all six pages. Fold each card on the indicated line and glue or tape the inside to make a two-sided card with the logo on one side and the character on the other. Place the cards character side down on a smooth surface and mix them up. Turn over two cards at a time to see if they match. If they don't, turn them face down again. Take turns turning over cards using your memory to recall where a matching card may be located. The person who matches the most pairs wins!



MR. RAY

FOLD



FOLD



MR. RAY

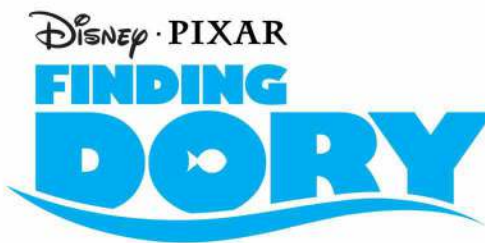


FOLD



BECKY

FOLD



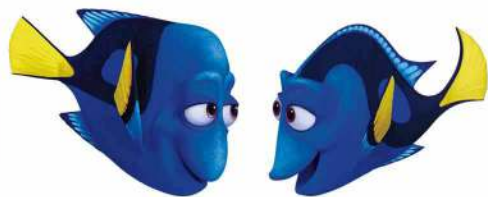
BECKY

Disney • PIXAR
**FINDING
 DORY**

IN THEATERS JUNE 17

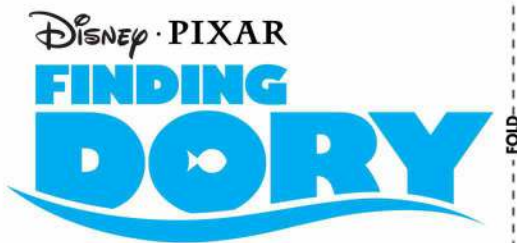
MEMORY MATCH

Have an adult cut out the cards from all six pages. Fold each card on the indicated line and glue or tape the inside to make a two-sided card with the logo on one side and the character on the other. Place the cards character side down on a smooth surface and mix them up. Turn over two cards at a time to see if they match. If they don't, turn them face down again. Take turns turning over cards using your memory to recall where a matching card may be located. The person who matches the most pairs wins!



CHARLIE & JENNY

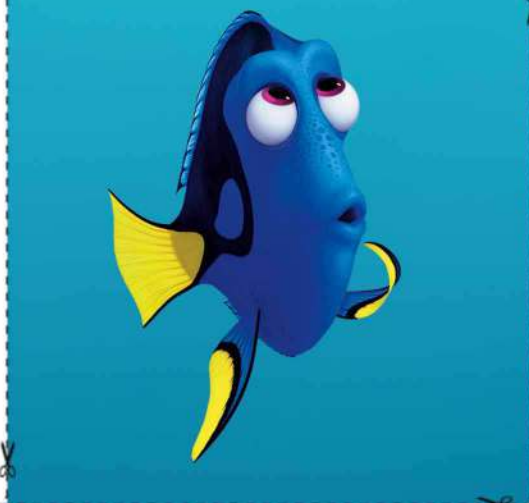
FOLD



FOLD



CHARLIE & JENNY

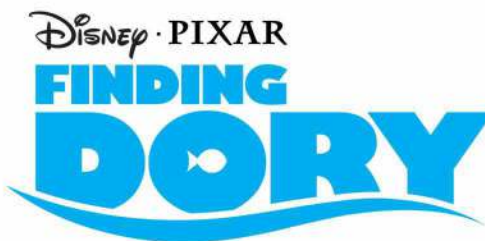


FOLD



SQUIRT

FOLD



SQUIRT

Disney • PIXAR
**FINDING
DORY**

IN THEATERS JUNE 17

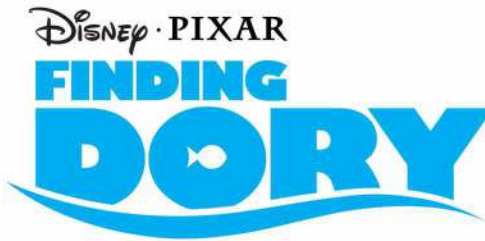
MEMORY MATCH

Have an adult cut out the cards from all six pages. Fold each card on the indicated line and glue or tape the inside to make a two-sided card with the logo on one side and the character on the other. Place the cards character side down on a smooth surface and mix them up. Turn over two cards at a time to see if they match. If they don't, turn them face down again. Take turns turning over cards using your memory to recall where a matching card may be located. The person who matches the most pairs wins!



CRUSH

FOLD



FOLD



CRUSH

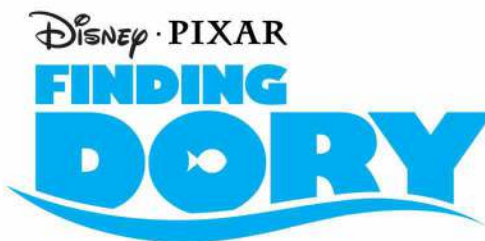


FOLD



FLUKE & RUDDER

FOLD



FLUKE & RUDDER

Disney • PIXAR
**FINDING
 DORY**

IN THEATERS JUNE 17

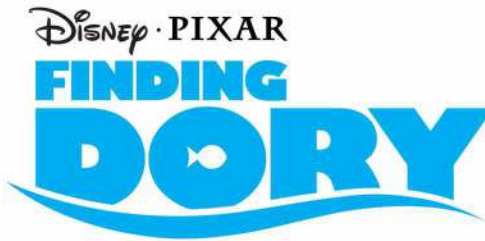
MEMORY MATCH

Have an adult cut out the cards from all six pages. Fold each card on the indicated line and glue or tape the inside to make a two-sided card with the logo on one side and the character on the other. Place the cards character side down on a smooth surface and mix them up. Turn over two cards at a time to see if they match. If they don't, turn them face down again. Take turns turning over cards using your memory to recall where a matching card may be located. The person who matches the most pairs wins!



OTTERS

FOLD



FOLD



OTTERS

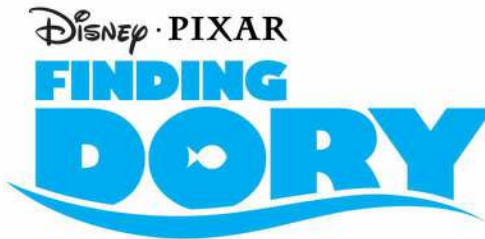


FOLD



DORY & HANK

FOLD



DORY & HANK